



2020 Kansas QSO Party Rules

29 Aug 2020 1400 – 0200 UTC 30 Aug 2020 1400 – 2000 UTC
Saturday 9-9 CDT Sunday 9-3 CDT

2020 Highlights

- Spell **KANSAS, QSOPARTY, SUNFLOWER** and **YELLOWBRICKROAD** as you work our 1x1 call operators to earn antique radio stamps and fill your certificate. Plaques, monogrammed sweatshirts and T-shirts continue as part of the prize package. Earn a KSQP T-Shirt by collecting all nine of our original stamps!
- In response to COVID-19, the new Kansas Youth category replaces Kansas School and the new Kansas Club category allows distributed operations.
- Check out the Kansas QSO Party CW Awards for both in-state and out-of-state operators. You can still chase 1x1 ops on other modes and be eligible for this award.
- The Kansas QSO Party is pleased to be part of the State QSO Party Challenge.
- Rules may change due to rapidly changing COVID-19 restrictions. Operator safety is always the highest priority. Check the web site for the latest updates.

OBJECT

Stations outside of Kansas work as many Kansas stations in as many Kansas counties as possible. Stations in Kansas work everyone.

EXCHANGE

Kansas stations send signal report and county. Stations outside of Kansas send signal report and state, Canadian province, or DX. **See below for FT8 special category rules.**

QSO POINTS

Stations may be worked once on Phone, once on CW and once on Digital per band. Each complete non-duplicate Phone contact is worth 2 points. Each complete non-duplicate CW or Digital contact is worth 3 points.

MULTIPLIERS

Multipliers are counted only once. All stations log Kansas contacts with 3-character county abbreviations. The KS abbreviation is not used. Log all other contacts as two characters. Use DX for stations outside of the United States and Canada.

Kansas Stations – maximum of **64 multipliers** including:

- US states (50) – The first Kansas county logged counts as the Kansas multiplier.
- Canadian provinces/territories (13) – AB BC MB NB NL NT NS NU ON PE QC SK YT
- DX (1)

Non-Kansas Stations – maximum of **105 Kansas county multipliers**

BONUS STATION

All stations receive a one-time bonus of 100 points for contacting **KS0KS** – the club call of the Santa Fe Trail ARC. Bonus station contacts also count for QSO credit on all allowable bands and modes.

SCORE

Total score = (QSO points x multipliers) + bonus points (maximum 100)

FREQUENCIES

Contact stations on 80, 40, 20, 15, 10 and 6 meters. WARC band contacts and contacts using repeaters, digipeaters or the internet do not count. All contacts must be simplex.

Suggested frequencies (recommend staying in the General parts of the bands):

- **HF CW** - 40kHz up from band edge (mobile window 35-40)
- **HF Phone** - 3840, 7240, 14240, 21340, 28440
- **HF Digital** - around customary calling frequencies
- **VHF** - around customary calling frequencies or on simplex frequencies

ENTRY CATEGORIES (Select one plus optional FT8 category)

- **Single-Op QRP** - 5W max, one transmitted signal
- **Single-Op Low Power** - 100W max, one transmitted signal
- **Single-Op High Power** - greater than 100W, one transmitted signal
- **Multi-Op** - any legal power, multi/multi allowed, one transmitter location
- **Youth** - 100W max, one transmitted signal (see below)
- **Kansas Club** - any legal power, multi/multi distributed ops allowed (see below)
- **Kansas Mobile Single-Op Mixed** - 100W max, one transmitted signal, driver
- **Kansas Mobile Single-Op CW Only** - 100W max, one transmitted signal, driver
- **Kansas Mobile SSB Only** - 100W max, may be Single-Op or Multi-Op
- **Kansas Mobile Multi-Op** - 100W max, one transmitted signal
- **Kansas Mobile Unlimited** - more than 100W and/or multi/multi
- **Kansas Mobile Unassisted** - 100W max, solo driver/operator (any mode)
- **Kansas Portable** - any legal power, multi/multi allowed (see below)
- **Canada or DX** - any legal power, one transmitted signal, single-op only
- → **FT8 Single-Op**, 100W max, one transmitted signal (see below)

MISCELLANEOUS

1. Kansas stations should call CQ Kansas QSO Party, CQ KSQP or CQ KQP.
2. Stations calling Kansas should call CQ Kansas or CQ KS.
3. Kansas mobile stations should identify /M or /county. Kansas 1x1 stations should ID with their actual callsign at least once an hour as per FCC regulations.
4. The use of spotting nets using DX clusters, packet nodes, telephone, or other means is permissible for all entry categories.
5. CW contacts must be made in the CW portion of the band. No cross-mode contacts.
6. Mobile is a station that is self-contained and capable of legal motion (street, water, or air) while operating, motion optional.
7. All Kansas Mobile categories may use an additional driver except Unassisted.

8. Mobile unassisted stations are not expected or encouraged to operate while driving.
9. Kansas stations that change counties are considered to be a new station and may be contacted again for point and multiplier credit.
10. If a Kansas station is on a county line between two or more Kansas counties, a separate QSO must be logged for each county listed as worked.
11. Mobiles travelling together may log each other only once per county.
12. **Kansas Club** operations all use the same call sign and may be distributed over multiple member locations. Avoid simultaneous transmissions on the same band and mode. Turn in one combined log.
13. **Youth** category is for youth ages 17 and under. One or more youth operators may be assisted by a control operator if they are unlicensed.
14. **Kansas Portable** is an operation at one or more locations using equipment and/or antennas which must be set up at each location and cannot be used in motion.
15. → **FT8** Log signal report and grid square. Turn in a separate log (text file, ADIF or Cabrillo format) named call_FT8.LOG (ex: W0BH_FT8.LOG). In-state and out-of-state winners will be determined by counting non-duplicate contacts (no multipliers). **Do not include FT8 contacts in your regular KSQP log.**
16. All Kansas QSO Party participants should **follow current CDC and government COVID-19 guidelines** as appropriate. **Stay safe!**

ENTRIES

Entries must be date-stamped or postmarked no later than October 1. Only one entry per call sign is allowed except for FT8 entries. Entry submission implies that the contestant agrees to be bound by the decisions of the Kansas QSO Party Coordinator.

Be sure to include your call sign, name, address, location and entry category. If you qualify as a Kansas Rookie, please note that as well. Use the standard Cabrillo header or additional text lines at the top of the file as necessary. Distributed Club logs and Kansas Mobile logs should be combined into one log file for submittal.

The Kansas QSO Party is part of the State QSO Party Challenge. More information may be found at <http://stateqsoparty.com>. All participants are encouraged to submit your score and comments to the **3830 Reflector: www.3830scores.com** as part of this challenge. To be eligible for a Kansas QSO Party award, you also need to submit a log to the Kansas QSO Party as shown below. Please submit a log regardless of your score!

Entries with incomplete or improperly logged contacts will be subject to penalties or disqualification. Duplicate QSOs are not counted for points and will not result in penalties, but they may be used to prove the integrity of other logs. Please do not remove duplicates.

Electronic logs should be named with your call sign (ex: W0BH.LOG). Submit your log by one of the following two methods. Deadline for log submissions is October 1.

Method 1 (preferred) – Attach your log file to an email with your call sign in the Subject line. Send the email to logs@ksqsoparty.org. **Cabrillo format preferred.**

Method 2 - Paper logs, or logs on electronic media may be submitted via postal mail to: **Kansas QSO Party, c/o Bob Harder, W0BH, PO Box 746, Hesston KS 67062.**

AWARDS

| | Power | Single-Operator | Multi-Operator | Mobile Portable | Youth | Canada | DX | FT8 | Club | CW |
|---------------|-------|-----------------|----------------|-----------------|--------|--------|----|-----|--------|--------|
| Non-KS | High | 1 | 4 | na | 5 | 6 | 7 | 20 | na | 23 new |
| | Low | 2 | | | | | | | | |
| | QRP | 3 | | | | | | | | |
| KS | High | 8 | 11 | 12-18 | 19 new | na | na | 21 | 22 new | 24 new |
| | Low | 9 | | | | | | | | |
| | QRP | 10 | | | | | | | | |

First Place – Choice of a monogrammed sweatshirt or plaque awarded to First-place entries with 50 or more contacts. Multi-Op and Club categories receive a plaque. FT8 categories receive a sweatshirt. There is no minimum contact requirement for the FT8 category.

Second and Third Place - An Antique Radio Stamp T-Shirt will be awarded to all single-op Second and Third-place entries, sponsors and 1x1 call operators who don't already have one. Multi-op and Club categories, international stations and stations who already have a T-shirt earn our certificate / stamp award instead.

Kansas QSO Party CW Award - This plaque or sweatshirt is awarded for the highest CW score by a single-op participant not in a mobile or portable category. All logs at any power level will be rescored after SSB contacts are removed. If the winner operated mixed mode and would also qualify for a category win, the winner will have a choice of awards with the unclaimed award going to the next qualified participant. You may operate mixed mode and still be eligible for this award. This award is offered for both in-state and out-of-state participants.

Kansas QSO Party Sunday Award - This plaque or sweatshirt is awarded for the highest Sunday (Day 2) score by an out-of-state single-op participant who didn't win a category. All logs at any power level will be rescored after Saturday (Day 1) contacts are removed. You may participate on both days and still be eligible for this award.

Worked All Kansas Award - A sweatshirt is awarded to any station contacting all 105 counties. Worked All Kansas has been awarded the past nine years.

Kansas Rookie Award – This plaque or sweatshirt is awarded for the highest in-state score from a first-time Kansas QSO Party participant in a Single-Op Fixed, Mobile or Portable category.

Kansas Sunflower Award Bonus Drawing

Every non-winning Kansas log (minimum 25 contacts) receives one entry and every non-winning non-Kansas log receives one entry for each unique 1x1 call worked in separate bonus drawing pools. If you didn't win a category, you might still win one of our monogrammed amateur radio stamp T-shirts or sweatshirts!

KANSAS QSO PARTY CERTIFICATES and ANTIQUE RADIO STAMPS

Awarded for spelling **KANSAS**, **SUNFLOWER**, **QSOPARTY** or **YELLOWBRICKROAD** using suffixes of selected 1x1 calls.

- Duplicate letters in a word require two different 1x1 calls.
- Letters may be shared between words.
- **KS0KS** counts as a wild card and **may be used once in place of one missing letter**.

Example

w0K k0A n0N k0S n0A w0S w0S n0U w0N w0F k0L w0O w0W n0E **KS0KS**

Our collection certificate, first issued in 2015, has room for all nine stamps. **You only need one certificate**. We keep track of which stamps you have earned for this certificate, not counting previous certificates which also had these stamps. You will be able to download your certificate in pdf or jpg format, and your stamp(s) will come by mail.

Until you fill your certificate, you may **choose ONE stamp for the first word** you spell, **ONE stamp for the second word**, and **ONE stamp if you spell all four words**.

To receive your stamps and certificate (if needed):

- **send in a log**
- **send an email** with your call in the subject line to kansas150@hotmail.com
- **include your name as you'd like it to appear on the certificate**
- **include which stamp(s) you'd like in order of preference in case we run out**
- **you can earn a maximum of 3 stamps**

If you prefer, we can print and mail your certificate.

Send the details above and \$3 to cover paper, ink, and mailing expenses to:

Bob Harder, W0BH, PO Box 746, Hesston KS 67062 (make check to Bob Harder).

Antique Radio Stamp T-Shirts

Stations who have earned all nine stamps on the nine-stamp certificate in a previous year, who don't have a T-shirt, and who turn in a 2020 log will automatically receive the antique radio stamp T-shirt (US only due to high postage costs).

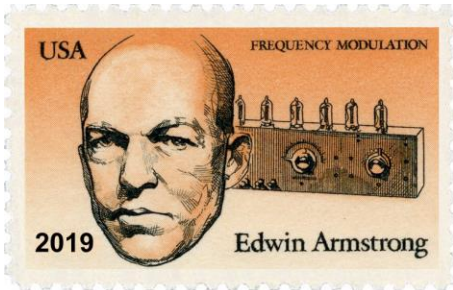
Collect all nine of our original stamps and earn your own monogrammed Kansas QSO Party antique radio stamp T-shirt!

Kansas QSO Party Award

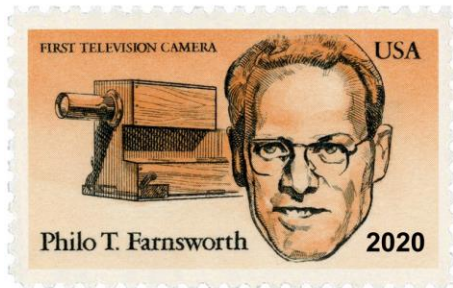
A number of you have earned all nine of our stamps and many of you are getting close. Four additional radio-related stamps are now available, **one per year**, as our way of thanking you for your participation. A new Kansas QSO Party Award certificate to hold these stamps will be available in 2020.

You are eligible to collect these stamps once you fill your nine-stamp certificate. Just request yours as described on the previous page.

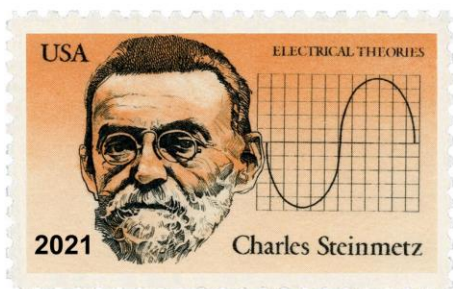
These four 20-cent stamps are from the American Inventors series issued in 1983.



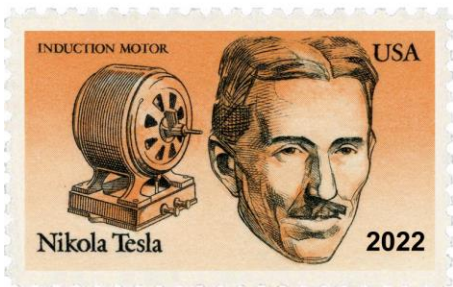
Edwin Armstrong invented the superheterodyne receiver and is best known for developing wide-band FM which he patented in 1933.



In 1927 at the age of 21, Philo T. Farnsworth invented the image dissector, the first working television camera tube.



In the 1890s, Charles Steinmetz developed alternating current theory which led to the electric power industry in the United States.



In 1887, Nikola Tesla invented an AC induction motor and transformer designs which he sold to George Westinghouse in 1888.

Antique Radio Stamps

You can earn these genuine antique radio stamps by working our 1x1 call operators during the Kansas QSO Party. Follow the directions above under Kansas QSO Party Certificate and Antique Radio Stamps.



#1 - Issued December 15, 1960. Commemorates Echo I, the first passive communications satellite.



#2 - Issued December 15, 1964 on the 50th anniversary of the ARRL. Note that 2014 was the ARRL Centennial. Commemorates the amateur radio operators who provided emergency communications for the Alaska earthquake earlier in the year.



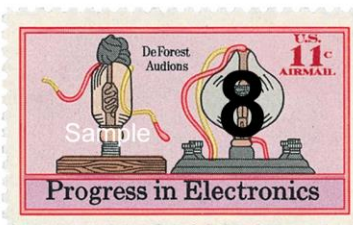
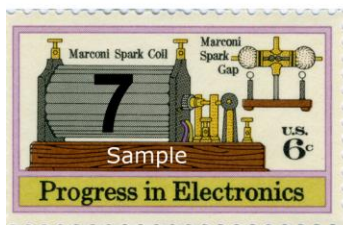
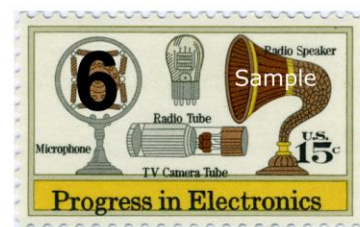
#3 - Issued August 1, 1967. Commemorates 25th anniversary of the Voice of America.



#4 - Issued October 7, 1940. Samuel Finley Breese Morse, working with Alfred Vail and Joseph Henry, publically demonstrated the first single-wire electric telegraph on January 11, 1938.



#5 - Issued October 6, 1965. The Morse code on the stamp spells ITU. Founded in 1865 as the International Telegraph Union, the ITU coordinates our radio spectrum.



#6 #7 #8 #9 - Issued in 1973, these Progress in Electronics stamps feature various early radio components, Marconi's wireless spark gap transmitter (range of 1/4 miles in 1895), the DeForest Audion (first triode vacuum tube invented in 1906) and the transistor (invented by Bell Labs in 1948).